

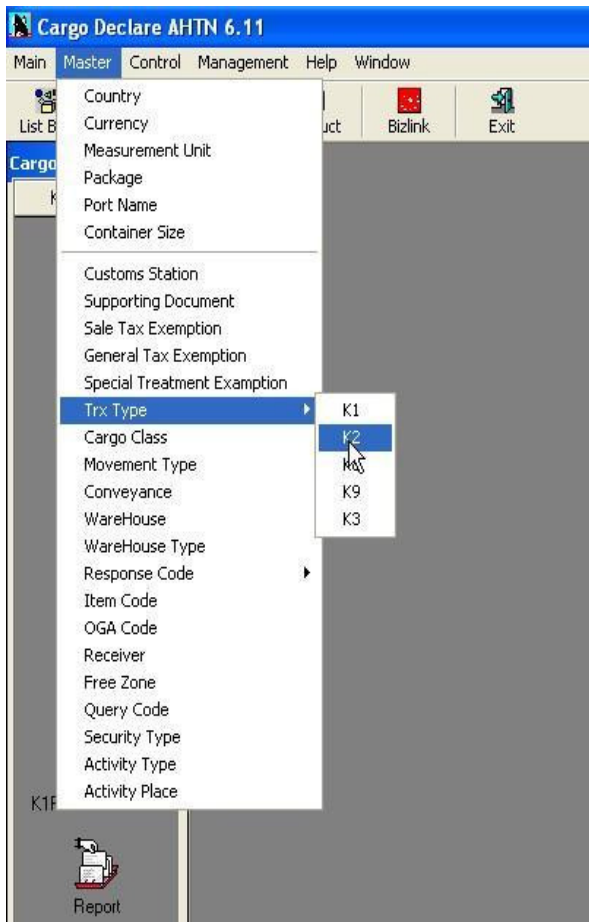
## How to Add Special Treatment in Reference Table Maintenance for K2 (Windows)

1. Login to Cargo\*Declare Version 6.11 (*figure 1.0*)



(*figure 1.0*)

2. Click on **Master > TRX Type > K2** (*figure 1.1*)



(*figure 1.1*)

3. Click on the "New" Button (figure 1.2)

K2 Trx. Type Maintenance - Edit User: SA

Trx. Type Code: 0001  
Description: NORMAL EXPORT  
SMK Code: E

General Exemption:  No  Yes  
Without Shipment:  No  Yes  
Sale Tax Exemption:  No  Yes  
Any Claimant:  No  Yes  
Asean Exemption:  No  Yes

Searching: Code [ ] Search

Code	Description	SMK Code
0001	NORMAL EXPORT	E
0002	EXPORT WITH EXEMPTIONS	X
0003	PROVISIONAL DECLARATION	P
0004	FINAL DECLARATION	F
0005	TEMPORARY EXPORT	TE
0006	SHIP'S STORE/PROVISIONS/SPARES	SS
0007	BUNKERING (DUTY PAID)	P
0008	BARTER TRADE EXPORT	B
0009	RE-EXPORT FOR TEMPORARY IMPORT	M

(figure 1.2)

4. Key-in the details as shown in (figure 1.3)

K2 Trx. Type Maintenance - Add User: SA

Trx. Type Code: 0021  
Description: EXPORT WITH PREFERENTIAL TARIFF  
SMK Code: S

General Exemption:  No  Yes  
Without Shipment:  No  Yes  
Sale Tax Exemption:  No  Yes  
Any Claimant:  No  Yes  
Asean Exemption:  No  Yes

Searching: Code [ ] Search

Code	Description	SMK Code
0012	EXPORT TO FZ FROM PCA	F
0013	EXPORT TO FZ FROM PCA (SUBCONTRACT WORK)	F1
0014	EXPORT WITH DRAWBACK SEC. 99, AKTA KASTA	D
0015	EXPORT (DRAWBACK SEC. 93 OR SEC 96 AKTA K	D1
0016	OTHER EXPORTS	TH
0017	LMW EXPORTS	L
0018	RECONCILIATION / DEPOSIT	RD
0019	REMILLED /REPROCESSED GODDS	RR
0020	EXPORTED VIA FREE ZONE	F

Code "S" has been added

(figure 1.3)

Click "Save" when done and "Yes" when you are prompted for confirmation.

Note: by now, the Export with Preferential Tariff has been added and ready to be use.