

How to Add Special Treatment in Reference Table Maintenance for K2 (DOS)

1. Login to Cargo*Declare (figure 1.0)



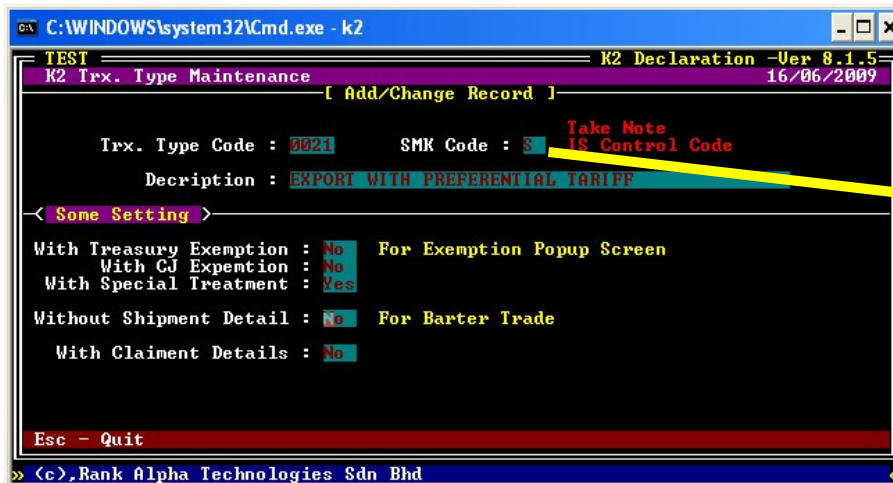
(figure 1.0)

2. Click on **Master > K2 Trx Type > Add/Change** (figure 1.1)



(figure 1.1)

3. Key-in the details as shown in (figure 1.2)



(figure 1.2)

Click "Yes" when you are prompted for confirmation.

Note: by now, the Export with Preferential Tariff has been added and ready to be use.