

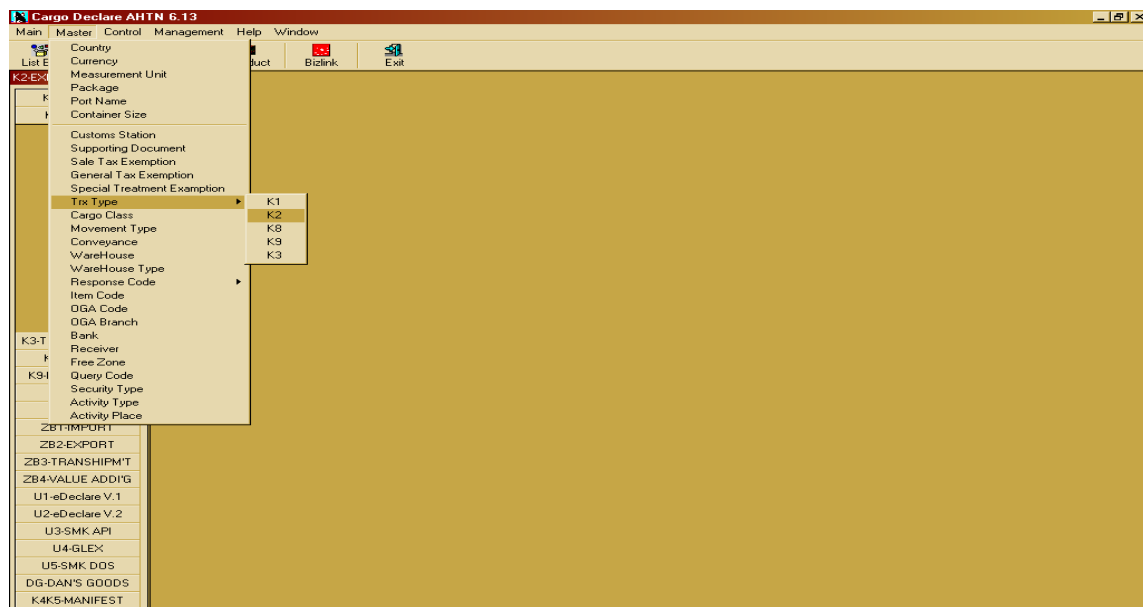
How to Add New Transaction Type in References Table Maintenance for K2 (Windows)

1.) Login to Cargo*Declare (figure 1.0)



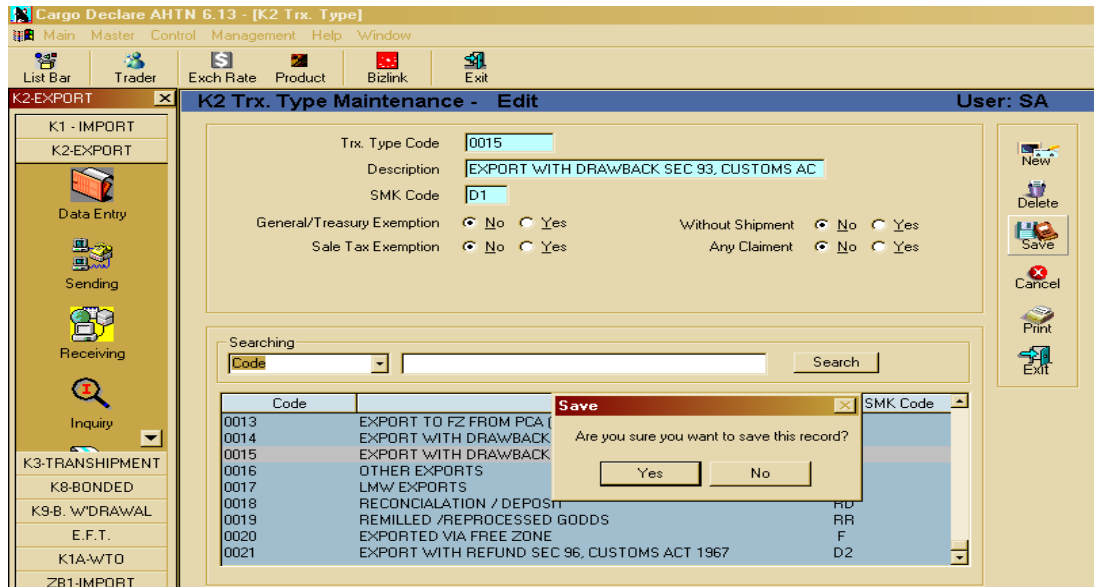
(figure1.0)

2. Click on Master >K2 Trx Type> Add / Change (figure 1.1)



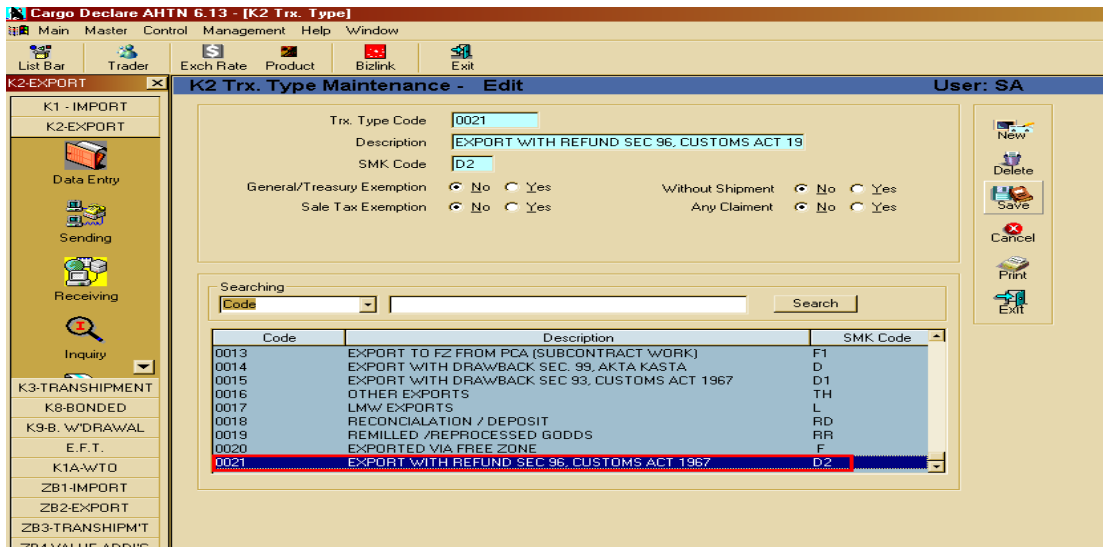
(figure 1.1)

Click on the “Edit” Button (figure 1.2)



(figure 1.2)

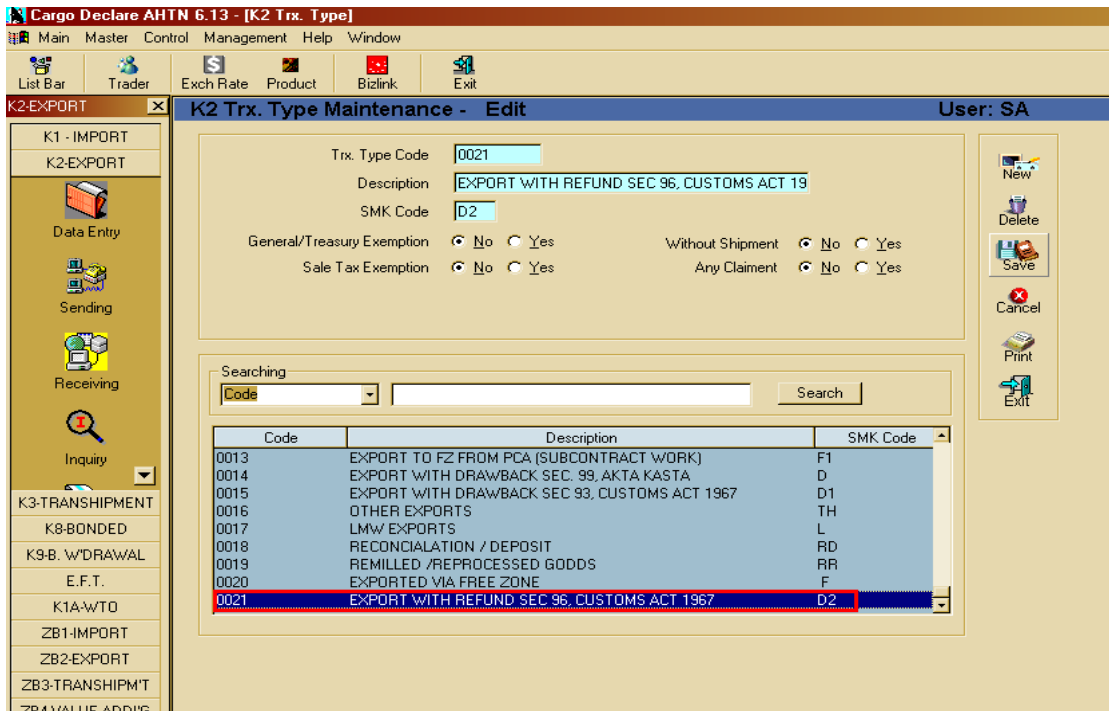
Edit D1 to Export With Drawback Sec 93, Customs Act 1967.



(figure 1.3)

Click “Save” when done and “Yes” when you are prompted for confirmation.

Noted: by now, the details has been added and ready to use.



(Figure 1.4)

Add D2 for Export With Refund Sec 96, Customs Act 1967.
 Noted: by now, the details has been added and ready to use.