

How to Add Transaction Type in References Table Maintenance for K2 (Dos)

1.) Login to Cargo*Declare (figure 1.0)



(figure 1.0)



(figure 1.1)

1. Click on Master >K2 Trx Type> Add / Change (figure 1.1)

3. Remove the details as shown in (figure 1.2)

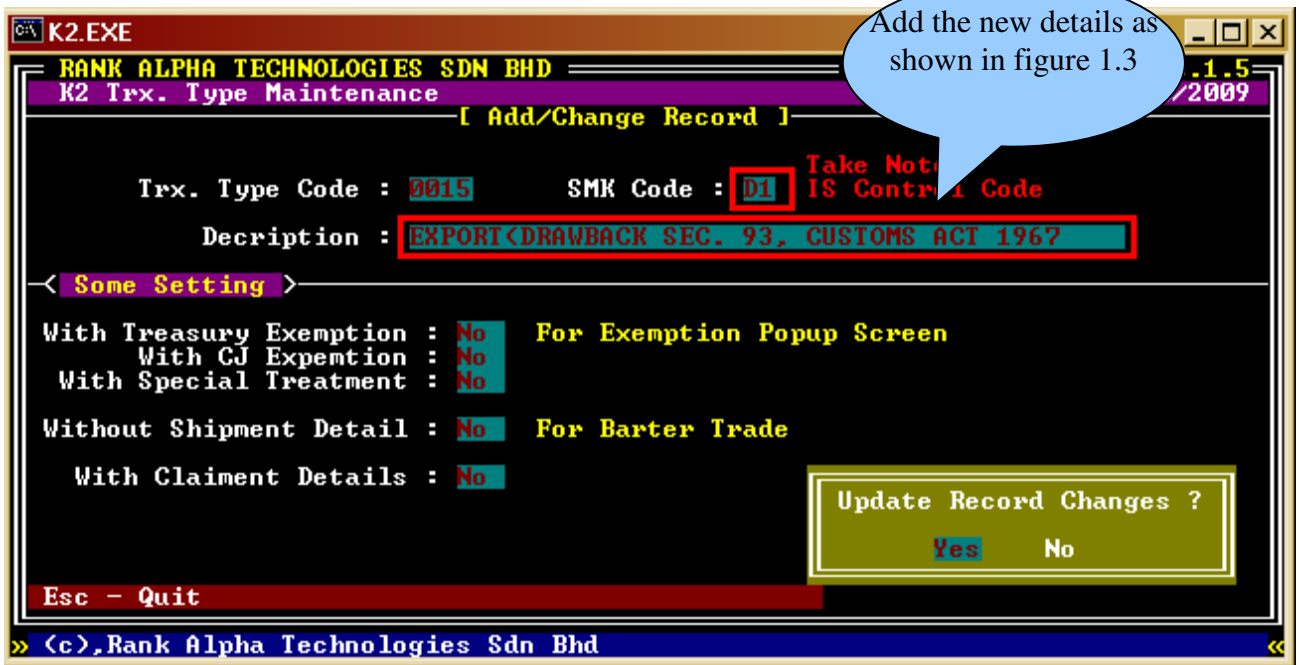
Remove the Details



(figure 1.2)

Key in the details as shown in (figure 1.3)

Add the new details as shown in figure 1.3



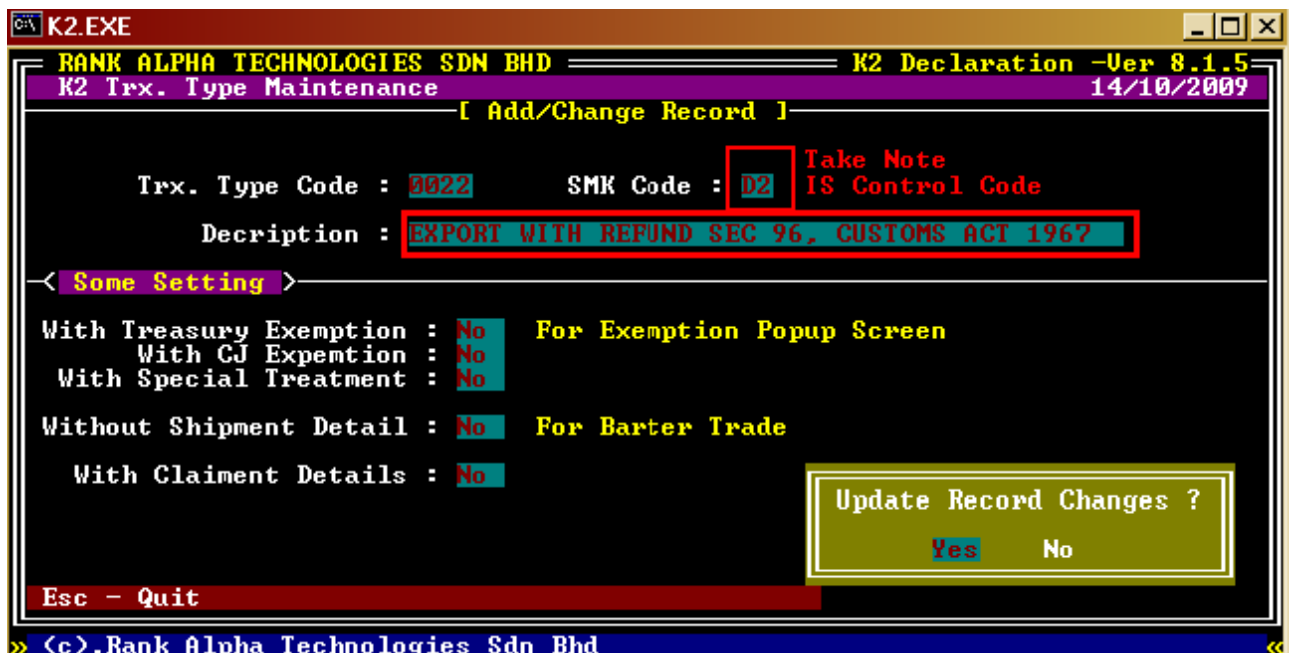
(figure 1.3)

Edit D1 to Export With Drawback Sec 93, Customs Act 1967

Click “YES” when you are prompted for confirmation.

Noted: by now, the details has been added and ready to use.

Key in the details as shown in (figure 1.4)



(figure 1.4)

Add D2 for Export With Refund Sec 96, Customs Act 1967.

Click “YES” when you are prompted for confirmation.

Noted: by now, the details has been added and ready to use.

